

Logging into the Mountwest Community and Technical College WiFi requires a Laptop with a wireless card and a valid Mountwest username and password. If you do not have your Mountwest username and password, please visit the Mountwest Help Desk in the basement of the CTC building, Room B5. To connect to the MCTC WiFi, please complete the following:

1

Click on the “Start Button” to view the Start Menu.

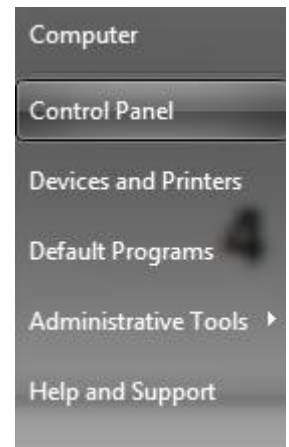


2

After clicking the Start Button, the Start Menu will popup providing a listing of your programs and on the right side of the menu, a listing of common system options.

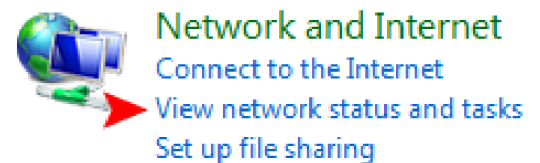
Choose the “Control Panel” button from the Start Menu.

The Control Panel window will then be displayed.



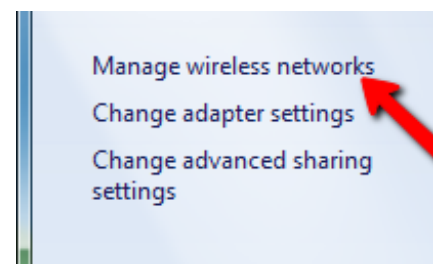
3

Next, choose the Network and Internet option, click the “View the network status and tasks” link:



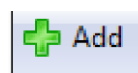
4

The Network Sharing Center window will open. In the upper left corner, click the “Manage Network Connections” link:



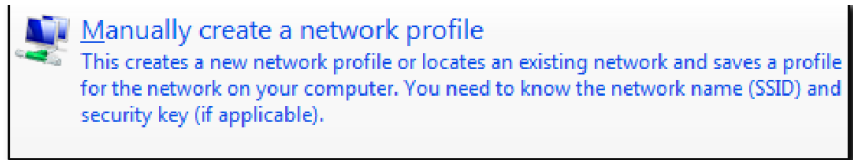
5

The Network Management window will open showing a listing of your previous network connections. Click on the “Add” button on the left side of the window.



6

The Manually Connect to a Wireless Network window will open showing connection options. Choose the “**Manually create a network profile**” link:



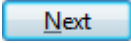
7

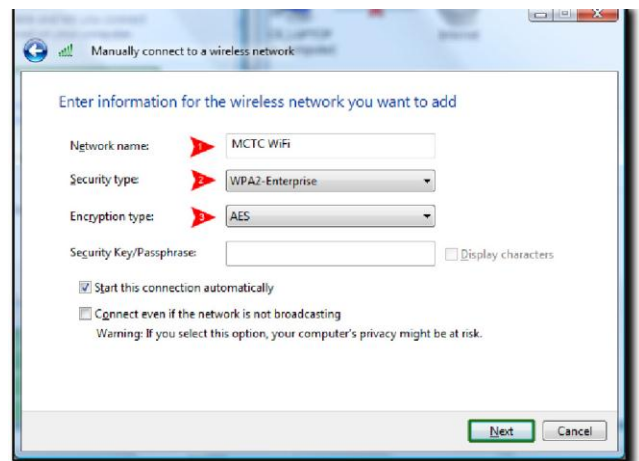
You will then be provided a window to enter the network information. Enter the following information in the form fields:

Network Name (Case Sensitive): MCTC WiFi

Security Type: Choose “WPA2-Enterprise”

Encryption Type: Choose “AES”

After you have entered the information, click the  button.



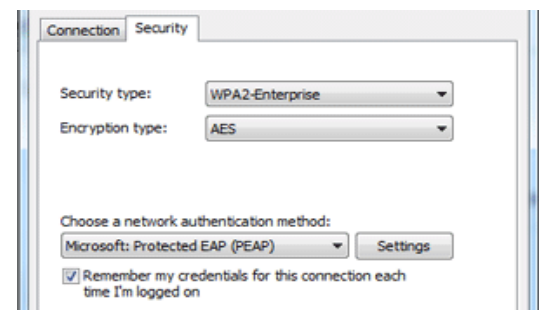
8

A Window will appear that displays “Successfully added MCTC WiFi”, you should now click the “Change connection settings” button:



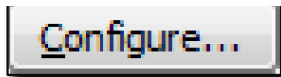
9

The MCTC WiFi “Wireless Network Properties” window will be displayed. First, click the Security tab, then click the “settings button:

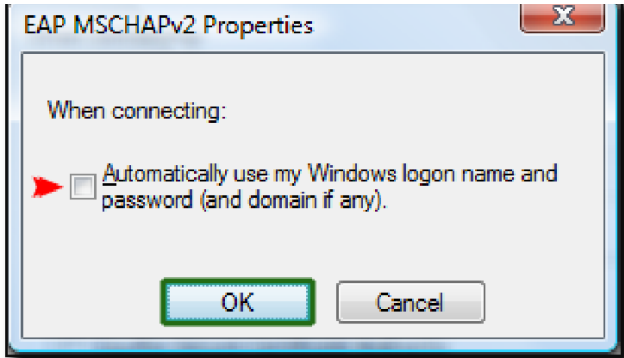


10

First, **uncheck** the **VALIDATE SERVER CERTIFICATE** check box:



Next, click the configure button:

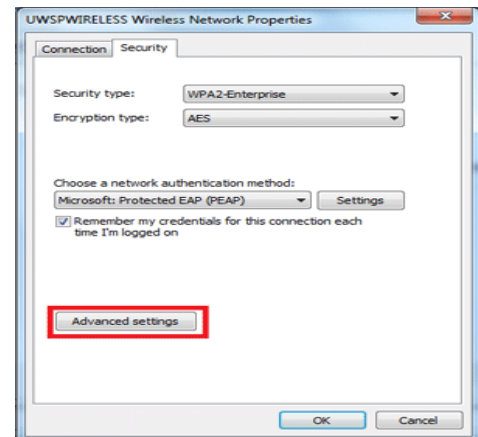


The EAP MSCHAPv2 Properties dialog will appear. **Uncheck** the **"Automatically use my Windows logon name and password (and domain if any)"** option.

Click OK to return to the EAP Properties box.

11

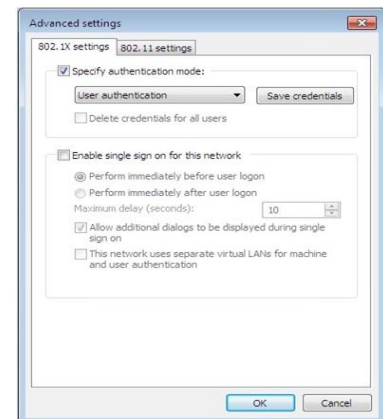
Click the "OK" button to return to the MCTC Wireless Network Properties box then locate and click the **Advanced settings** button (as indicated in the red box).



12

Under the 802.1X Settings tab check the "Specify authentication mode" and choose "User authentication" from the drop down box.

Click the "Save Credentials" button.



13



A window will appear (see below) prompting for your log in credentials.

In the username field type your full Mountwest Net username (username@mctc.edu) and in the password field type your Mountwest Domain Password (by default is six randomly generated letters in all CAPS)

After typing your credentials click the OK button.

14

Click the **OK** button once you are returned to the Advanced Settings Window and on the Wireless Network Properties window. A message should then appear stating: "Successfully added MCTC WiFi"

Your connection should automatically connect, if prompted select the "PUBLIC" profile for MCTC WiFi.



If you should require assistance with your WiFi configuration, please visit the Mountwest Help Desk located in the main CTC Building basement, room B5